



Are you an artist performing in Edinburgh? Or working at a venue, producing, teching, reviewing, researching a future performance, running another fringe festival? Are you looking for affordable artist housing near your venue? Are you interested in connecting with other artists and arts professionals? Receiving guidance while you're performing in Edinburgh? Then you might be interested in...

Fringe University's Professional Artist Programme 2025

Information

2025 Apply Online: <https://airtable.com/appvSgqFddszEf8nz/shrynetNDo90YbJAR>

Questions? Contact us at: info@fringeuniversity.com

Quick idea (but not always super accurate) link to available dates:

<https://airtable.com/appvSgqFddszEf8nz/shrwFsrqsfXnBg1X>

UPDATE: Get in touch with us about availability, or just apply, and we'll contact you.

About Fringe University

Founded in 2010, Fringe University works with universities, theatre artists, and arts organizations to create a unique learning experience at the Edinburgh Fringe Festival. We transform the Fringe into a university classroom! Fringe University offers a variety of theatre-related classes (theatre history, arts management, theatre production, performing, literature), provides opportunities for networking with artists and producers, and makes arrangements for university student theatre groups to perform at fringe festivals.

Our Fringe University professors have extensive experience in Edinburgh and with the Festival. Both have founded and run performance venues in Edinburgh, they have produced numerous Fringe shows throughout the years, and they have held various other roles at fringe festivals around the world. They are now both dedicated to sharing their knowledge and experiences with students and helping professors turn the Edinburgh Fringe into an experiential learning opportunity.

Fringe University is a U.S. based company and has worked with U.S. and Canadian Universities such as Drexel University, Oklahoma City University, Washington and Jefferson University, The University of the Arts, Waynesburg University, York University, and LeMoyne University. Students can receive university credits (undergraduate and graduate credits available) through their participating universities.

Find out more at: www.fringeuniversity.com

About Fringe University Artist Programme

The Artist Programme provides affordable central shared housing for artists performing at the festival. Fringe University helps artists navigate the Fringe, fosters connections between creative personalities—in performance, production, and management—and cultivates a supportive community. Furthermore, the programme brings together professionals with learners to provide opportunities for first-hand experience and artistic development.

The Details

As part of the Fringe University Artist Programme:

- *Accommodation is included.* Housing is individual rooms in a pod that consist of a shared living room/kitchen area. (We will do our best to have your whole show group in the same pod, but it will be with other artists, art professionals, or students - which is kinda the point.)
- *Shared accommodation with other artists and performers.* The pod may also have other Fringe participants in adjoining rooms.
- *Artist interaction with learners.* There may be opportunities for interviews or questions from the students.
- *Attendance invitations.* If you have free, open seats available at any of your performances, you can invite Fringe University students to attend.
- *Press day attendance.* On the days you have press coming for your show, Fringe University participants (e.g., staff, students) and others in the Artist Programme can be invited to attend.
- *Production assistance.* If you need help with your show, Fringe University students may be invited to help. (The university that is leaving on August 6th, wants to help groups get up and going.)
- *Fringe University activities and day trips.* Fringe University conducts sightseeing and tours. You are welcome to join, although you may have to cover your own costs.
- *Ticket deals.* Fringe University shares ticket deals and opportunities with students, and Fringe University artists are welcome to join these opportunities.
- *Production projects.* Fringe University and its affiliates may be able to do some producing projects for your show. Please ask about these opportunities.
- *Networking opportunities.* Fringe University plans to offer networking and social events for our artists.

FLAT TYPE TWO - 2

OPPORTUNITY - If this space is too expensive for you, but you have spare time during the festival - contact us about maybe a work exchange for a discount towards the programme. Only available in Flat Type Two.

NOTES on FLAT TYPE TWO - 2

- Flat Type Two does not allow two people in a room, nor do they allow anyone under 18 years of age. (They are really serious about the 18 some reason. Like, they'll kick you out serious.) Luckily, our university programme has 18 and up.
- Choosing this flat means you're taking a risk with us. My research shows this is a more party type student location during the school year (not necessarily during the festival, as they are primarily booking artists), and while the pictures look nice, it may not be that nice. (You know all rentals always show the nicest pictures, but the actual place ends up not nearly as nice.) From our 30 years experience renting for the festival, if it is crappy, they often can't move you to another place because

Edinburgh is packed during the festival. So there is always no refunds, and a “just live with it mentality from landlords in Edinburgh.” So since we don’t know this place, you will also be with us, hoping for the best, and you agree to live with whatever we end up with. They won’t ever give us refunds, so there will be no refunds to forward to you. This is a shared experience with us. It will be cost and location, balanced against an unknown dormy type location. 🙏 Let’s hope for the best!

- My research also shows that because this space is near the Cowgate, there could be noise from the street. Also, remember it is the festival, and a lot of folks are drunk and loud everywhere anyways. Central locations near all the bars are always louder anyway. But again just the basic central location could mean it is a louder location.
- Individual Rooms DO lock, there will it will probably be old school traditional keys, one per room, and your deposit will be used toward any fees they charge us for lost keys.
- Remember this is not a hotel, and everyone needs to clean up after themselves. Shared spaces (including bathrooms) will only be cleaned once by the landlords, I assume mid-August. So please be a good roommate, and hope all the others in the flat are also good roommates!

Programme Costs for Flat Type Two

- £1,450 per single person in the room (with shared bathroom) for the whole of the festival, **27 July (Monday) to 24 August (Sunday)**. (We might get one place with extra nights on the front or end - but it will be a wee bit more, and perhaps a **move** to the one flat that has longer dates.) There is also a £250 security deposit to cover any damages or lost keys; any remainder is refunded at the conclusion of the booking. No smoking in any of the accommodation areas. They charge us £250 for any smoking situation, and for lost keys, which is why we have to charge this amount. However, it is completely refundable if everything is tidy, no lost keys or smoking. Last year everyone was tidy and all deposits were returned. (This does not guarantee past students didn’t sneak smoke in the rooms.)
- Shorter bookings might be available. For bookings over 6 days the daily rate is £64 per night for the single. For reference, the following is the Fringe schedule divided by weeks:
 - Preview Dates: 27/28 July to 1 August
 - Preview Weekend: 1 Aug - 3 Aug
 - Week One Dates: August 3/4- - 9/10 August
 - Week Two: 10/11 August to 16/17 August
 - Week Three: 17/18 August to 24/25/27 August (remember we might need to switch rooms after the 24th depending on who stays how long - we might not be able to tell you if you have to switch or not until more folks book)
 - If you need something different from the dates above, we may be able to accommodate you, but will have a higher per-night rate to make those accommodations fit into the weekly schedule. Inquire with us. We do need those in week one to take the preview dates also, because we had a lot of preview dates last year go unused, we are trying to make those more affordable.
- For bookings less than 6 days the daily rate is £69 per night for the single **weekdays**, and £75 and for Friday and Saturday nights (and £64 for preview days July 27/28 July -1 Aug). These will not be available until longer bookings are sorted, and will only be to fill in holes between other booking. If you don’t care about dates, ask us about what odd holes we have to fill. We can give the lower price above for those dates (especially preview dates), even if less than 6 days.
- Full payment is needed to guarantee the room and entrance into the programme.
- We can invoice in U.S. dollars, Canadian dollars, or Pounds Sterling. Because we are a U.S.-based company we can also accept credit cards for invoices in dollars (only). (If you prefer to use a credit card, we can bill you in dollars no matter where you are from.) Our Canadian and U.K. payments go through Wise Bank account, which many of you probably use for international transactions anyway. We can send a letter proving our account. However, last year we did have some banks decline payments because it seemed scammy because we are in the U.S. You can find other artists who have done this in the past (or we can give you references from other artists, but if you find them yourselves it will be a more legit reference). But you also must remember we are not a rental company, this is a full Artists Programme that happens to include some housing if you want it. You

must be part of the Programme to be able to access the housing we offer. You can also be part of the programme and use other housing, or you can be part of the programme for the full stay even if you just want a dates to fill in dates.

- Just to help you understand, our Artists Programme is in our third year. Because of the new housing landscape in Edinburgh, as a company, we now need to book a lot of housing in advance to make sure we have adequate amounts for any possible student that might come. This year we are using the same housing as the last two years despite huge rental increases (we love the location and amenities, and works best for students and professors), and this year we are adding a new second type of housing that while is more affordable, though it is not as nice. The original (Type One) is a corporate dorm, that operates similarly to a hotel during the summer (and as corporate dorms during the school year). This year's additional housing (Type Two) is a very dormy dorm. We are able to get rates lower than their per person rates by booking large amounts of rooms for the full festival. When our university student numbers are confirmed, we release the remaining rooms for those wanting to participate in our Artists Programme. If you have any questions about our programme, please feel free to ask. If you would like to talk to someone who participated last year, we are happy to put you in touch with various folks.
- This Flat Type Two location will only allow one key per room, and there will be fines and fees for losing keys. If you lose the key, you will be responsible for replacement costs.
- Because we haven't been here before, and there isn't a proper reception desk, we will have to figure out how to get keys to you when you arrive. We will be in contact with you. (We also always send out an arrival email close to your arrival time. We also will ask for your flight/train/driving info closer to the time, to help us coordinate getting the keys to you.)
- Cancellation policy:
 - By 15 April: 100% refund
 - By 15 May: 80% refund
 - By 15 June: 40% refund
 - By 15 July: 20% refund
 - After 16 July: 0% refund

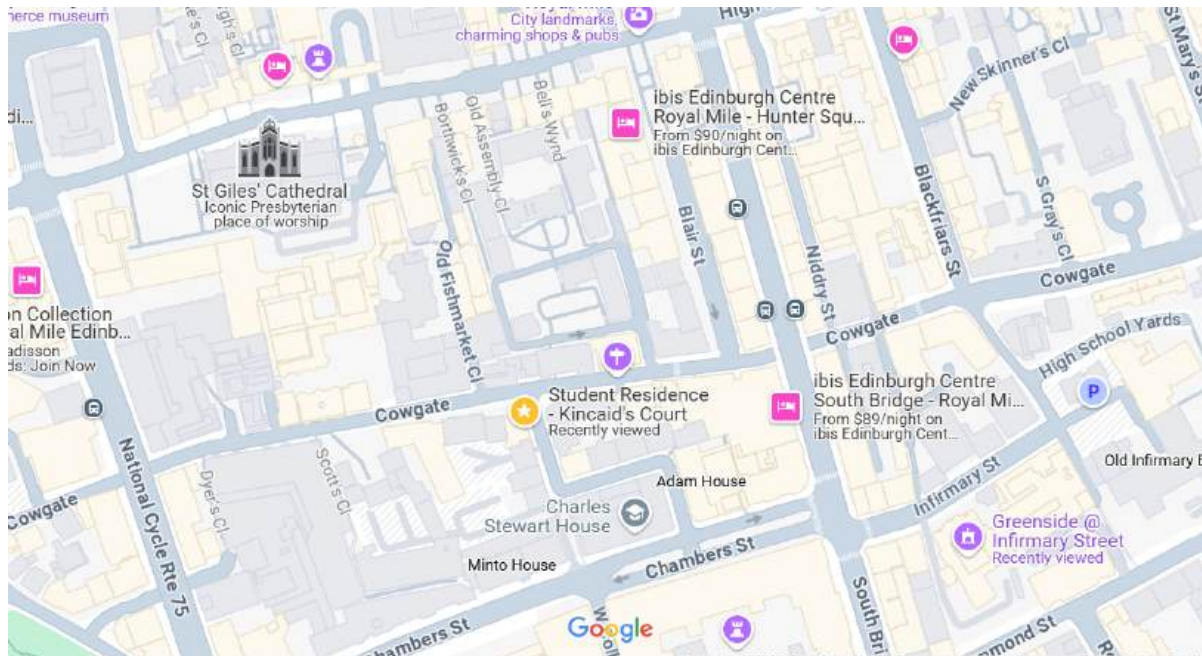
Information about the accommodations on the next few pages.

Flat Type TWO - Housing Information - This is new to us, so we don't have recent past experience with it. (Ok, full disclosure: we used it once over 20 years ago, and don't remember it. We're sure it's changed anyway.) ***We are basing below on what they told us, and some online research. It may not be entirely accurate, but should be pretty close.***

- Individual Lockable Room:
 - Small Double/Full Bed (usually 4 feet x 6 feet 3 inches or 120cm x 190cm) - remember they do not allow two people in a room
 - Lockable bedrooms
 - Usually there is a bookshelf of sorts
 - Wardrobe
 - Desk
 - One Desk Chair
 - Bedding (not luxurious like a hotel, very very simple and basic - in fact you might bring your own extra bedding if you are particular)
 - Internet
 - No television in the flats
- Bathrooms - Shared with 12 rooms - 3 with showers, and 1 with just the toilet. Well, all with sinks I suppose.
- NO ELEVATOR - flats could be on 3-6th floor. Typical Edinburgh.
- The Shared Kitchen/Living Room:
 - Shared with 12 rooms
 - Two Refrigerators/Freezer
 - Two hobs/ovens
 - Two Sinks
 - Microwave
 - Very basic dishes and pans
 - Small Sofa
 - Small table and chairs
 - Kettle
 - Toaster
 - Ironing Board and Iron
 - We think there will be Vacuum, Mop, and Broom (especially since

- they don't clean for us - maybe once the whole month)
- The Premises:
 - Parking lot style "courtyard" - but doesn't include parking for us.
 - Shared communal lounge.
 - Foosball Table
 - I saw a piano in one picture, but can't guarantee this.
- Paid Laundry (not sure of exact location)
- Seems to have bike storage (can't be certain)
- Cleaning
 - All residents are responsible for cleaning up after themselves.

Housing Location Map:



Yellow Star is Housing Location

Adam House is the big Gilded Balloon venue, and St. Giles on the map is on the Royal Mile

Address: 149 Cowgate, Edinburgh EH1 1JT

Google Maps Link: <https://maps.app.goo.gl/GnFNNtQQy7spQMcs7>

Some Housing Pictures of Type TWO:

(Remember these pictures are representative only. Also, remember we haven't seen this in person, and these pictures are likely images of their better rooms. Also they have smaller 5 person flats here, and the kitchen pictures seem to be of the smaller kitchens - since they only have one hob/sink/fridge. We assume it will be similar, just more hobs/sinks/fridges in each.)





Ground floor communal area



Ground floor communal area



Ground floor communal area



Ground floor communal area



Ground floor communal area



Those above are the “marketing” photos. Below are some images I just randomly found online - no idea when they were taken. Also, I may get another similar dorm accidentally in the mix. Just might give us a more realistic idea of what it could look like.





ONE OF OUR ALUMNI has stayed in both places in the past few years, and gave her opinion of both places. Perhaps that might help you decide between the two.

"It's [Kincaid] very much a "you get what you pay for" kind of place, not to discourage you at all! Having stayed at both I personally would still pick it [Kincaid - Type Two] over Salisbury [Type One], but pretty much solely because of the location.

As you've already gathered, it's [Kincaid] very basic. We were in a 12 room pod on the first floor. About half the rooms were on the Cowgate side and the other half over the courtyard. The noise levels are dramatically different, the Cowgate side is practically right over the Three Sisters so definitely put people who seem less likely to care about noise there, there is music until at least three and then the bin collection starts. The courtyard side is much quieter, although still a lot noisier than Salisbury Court.

As for what's there, it's bare bones, but my philosophy was if you're spending too much time in the room then you're not getting what you need out of Fringe anyway. I do remember the sheets being exceptionally scratchy so I agree with you that it's not a bad idea to bring your own/buy some cheap ones. I was up for twelve nights and didn't need to do laundry, so I don't know how those work.

The bathroom situation was way less bad than I expected, I was on the Cowgate side for most of the time and we had two toilets over there, one with a shower. Everybody was on the same page about keeping shower usage quick so it never became a problem. I found out later there were two showers on the courtyard side so realistically as long as everyone is aware there shouldn't be too many issues.

The common room in the apartment is really, really big and the kitchen is sort of off to the side, so I don't see many problems with using it for a classroom, our company was using it for various meetings throughout the day without it impacting anybody staying there really. I didn't really spend any time at the lobby room downstairs and they definitely weren't keeping consistent hours so it would have been hard to know when they were open generally speaking. The courtyard isn't a parking lot at all although service vehicles do access it from time to time. There's a lot of outdoor space.

The big advantage of it is the location in fact other than the location it doesn't really have anything going for it at all. But the location is extremely great and still tips it slightly over Salisbury [Type One] for me (solely based on personal preference of course). Interestingly there were actually quite a lot of groups of older people that would be on the upper levels for a few nights and they seemed reasonably well-to-do, accommodation in that part of town is just really, really hard to come by that time of year for obvious reasons.

Anyway those are my initial thoughts, happy to answer any other questions that might come up!"

THANKS TO OUR ALUMNI for offering up some interesting comparisons between the two options we now have!

WANT IT? APPLY ONLINE - No commitment at this time.

2025 Apply Online: <https://airtable.com/appvSgqFddszEf8nz/shrynetNDo90YbJAr>

Questions? Contact us at: info@fringeuniversity.com

FLAT TYPE ONE - 1 (nicer buy more expensive option, limited availability)

Programme Costs for Flat Type One (Go much further down for Flat Type Two - with lower costs)

- Because of rising accommodation costs in the city, we have unfortunately had to raise our prices significantly in accordance with the building we use, which is why we added a second Flat Type (Flat Type Two) this year, for those who can't keep up with these rising costs.)
- £2,390 per single person in the room (with private bathroom) for the whole of the festival, **27 July (Sunday) to 26/27 August (Wednesday)**. There is also a £250 security deposit to cover any damages; any remainder is refunded at the conclusion of the booking. No smoking in any of the accommodation areas. They charge us £250 for any smoking situation, which is why we have to charge this amount. However, it is completely refundable. Last year everyone was tidy and all deposits were returned.
- £2,490 for two people in the one double room (with private bathroom) for the whole of the festival, **27 July (Sunday) to 26/27 August (Wednesday)**. There is also a £250 security deposit for the second person to cover any damages; any remainder is refunded at the conclusion of the booking.
- Shorter bookings might be available. For bookings over 6 days the daily rate is £117 per night for the single, £123 for the double. For reference, the following is the Fringe schedule divided by weeks:
 - Preview Dates: 27 July to 1 August (Lowest rate if dates available) If over 6 days, preview days will only be £95 a night.
 - Preview Weekend: 1 Aug - 3 Aug
 - Week One Dates: August 3/4 - 9/10 August
 - Week Two: 10/11 August to 16/17 August
 - Week Three: 17/18 August to 24/25/27 August
 - If you need something different from the dates above, we may be able to accommodate you, but will have a higher per-night rate to make those accommodations fit into the weekly schedule. Inquire with us. We do need those in week one to take the preview dates also, because we had a lot of preview dates last year go unused, we are trying to make those more affordable.
- For bookings less than 6 days the daily rate is £132 per night for the single, £142 for the double for **weekdays**, and £145 and £152 for Friday and Saturday nights (and £110/£120 for preview days July 27 July -1 Aug). These will not be available until longer bookings are sorted, and will only be to fill in holes between other booking. If you don't care about dates, ask us about what odd holes we have to fill. We can give the lower price above for those dates (especially preview dates), even if less than 6 days.
- Full payment is needed to guarantee the room and entrance into the programme.
- We can invoice in U.S. dollars, Canadian dollars, or Pounds Sterling. Because we are a U.S.-based company we can also accept credit cards for invoices in dollars (only). (If you prefer to use a credit card, we can bill you in dollars no matter where you are from.) Our Canadian and U.K. payments go through Wise Bank account, which many of you probably use for international transactions anyway. We can send a letter proving our account. However, last year we did have some banks decline payments because it seemed scammy because we are in the U.S. You can find other artists who have done this in the past (or we can give you references from other artists, but if you find them yourselves it will be a more legit reference). But you also must remember we are not a rental company, this is a full Artists Programme that happens to include some housing if you want it.. You must be part of the Programme to be able to access the housing we offer. You can also be part of the programme and use other housing, or you can be part of the programme for the full stay even if you just want a dates to fill in dates.
- Just to help you understand, our Artists Programme is in our third year. Because of the new housing landscape in Edinburgh, as a company, we now need to book a lot of housing in advance to make sure we have adequate amounts for any possible student that might come. This year we are using the same housing as the last two years despite huge rental increases (we love the location and amenities, and works best for students and professors), and this year we are adding a new second

type of housing that while is more affordable, is not as nice. The original (Type One) is a corporate dorm, that operates similarly to a hotel during the summer (and a corporate dorms during the school year). This year's additional housing (Type Two) is a very dormy dorm. We are able to get rates lower than their per person rates by booking large amounts of rooms for the full festival. When our university student numbers are confirmed, we release the remaining rooms for those wanting to participate in our Artists Programme. However, this year we know one student group will be only there up to part of week one, so we are opening those dates right away. If you have any questions about our programme, please feel free to ask. If you would like to talk to someone who participated last year, we are happy to put you in touch with various folks.

- Cancellation policy:
 - By 15 April: 100% refund
 - By 15 May: 80% refund
 - By 15 June: 40% refund
 - By 15 July: 20% refund
 - After 16 July: 0% refund

Information about the accommodations on the next few pages.

Flat Type One - Housing Information (This does not apply to the future more affordable accommodations, ONLY to Flat Type One.)

- Individual Lockable Room:
 - Small Double/Full Bed (4 feet x 6 feet 3 inches or 120cm x 190cm)
 - Bed is built into the room and against the wall
 - Underbed Storage (mattress lifts up)
 - Shelving and Storage
 - Wardrobe
 - Desk
 - One Desk Chair
 - Bedding (not luxurious like a hotel, very simple and basic)
 - Internet
 - Television in the shared living room and in the building foyer
- Private Bathroom within the Lockable Room:
 - Toilet
 - Sink
 - Shower
 - Towel
- The Shared Kitchen/Living Room:
 - Shared with 10 rooms
 - Two Refrigerators/Freezer
 - Two Stoves
 - Two Sinks
 - Microwave
 - Basic dishes and pans
 - Large Sofa
 - TV
 - Bar Stools for Island
 - Kettle
 - Toaster
 - Ironing Board and Iron
 - Vacuum, Mop, and Broom
- The Premises:
 - Courtyard
 - Study rooms
 - Onsite Laundry
 - TV area
 - Pool Table
- Cleaning
 - All residents are responsible for cleaning up after themselves.

Housing Location Map:



Yellow Star is Housing Location

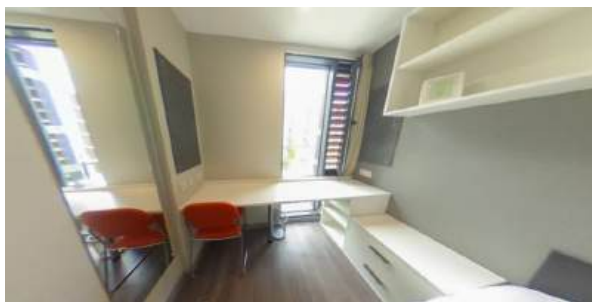
Red Spot is Summerhall

Address: 104 St. Leonard's St, Edinburgh

Google Maps Link: <https://goo.gl/maps/YupyNottjQS4rzzf9>

Some Housing Pictures of Type ONE:

The Room



The Private Bathroom



Shared Kitchen/Living Room (varies in set up slightly, so this is just an idea of potential set up)



Here are some cool 3D tours of the place!

3D tour of the Lobby area of Flat Type One

<https://my.matterport.com/show/?m=Zdy2gBaojJw>